

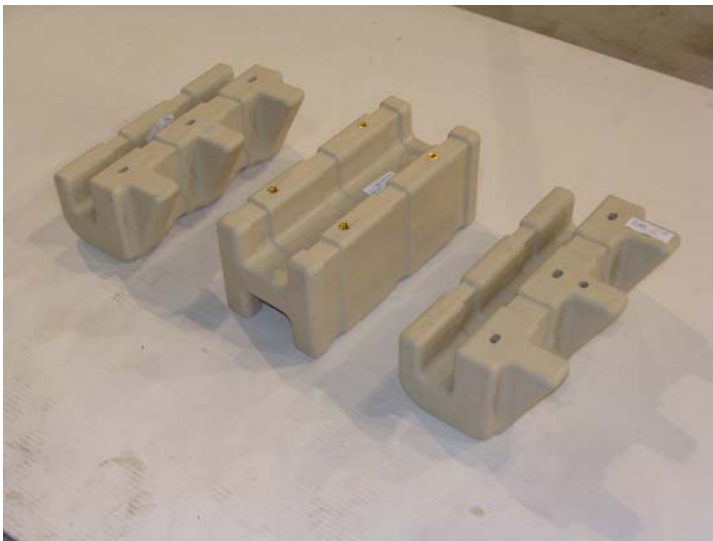


411 West Congress St., Maple Lake, MN 55358 Toll Free 877-466-8837 www.wavearmor.net

Wave Port – Side by Side – Assembly Instructions:

Although it is not necessary that two Wave Ports be connected, some people may want to do this.

1. Position two Wave Ports (Part J) side by side in the water.
2. Slide a 16" H-beam (Part V) into the back (entrance side) channels on the undersides of the ports.
3. Slide a 16" C-clamp (Part T) over the H-beam and against the bottom of the port, lining up the holes in the C-clamp with the threaded inserts in the bottom of the port.
4. Attach the C-clamp with 3 bolts and washers (Parts 2 & 3).



Depending on the options you purchased, you may not have all the parts shown below. Before beginning assembly, be sure to familiarize yourself with the parts.

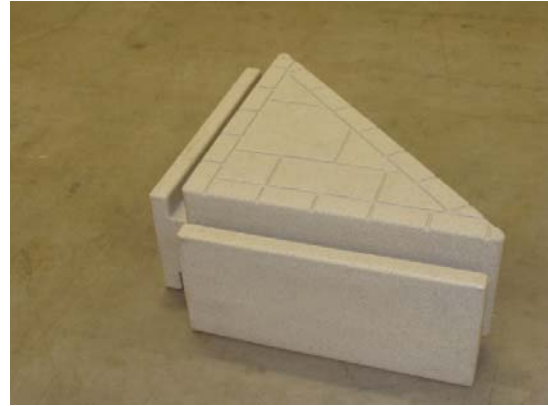
Part	Name
A	Dock Section
B	Corner Gusset
C	24" H-Beam
D	50" H-Beam
E	Post Attachment
F	Pipe Adapter
G	Vertical Bumper
H	Horizontal Bumper
I	Dock Ramp
J	Wave Port
K	Bow Stop
L	Tie-Down Cleat - Small
M	Flip up Cleat - Large
N	Entrance Slide
O	Port Front and Dock Hinge
P	Side Hinge
Q	Universal Hinge
R	Linkage Arm
S	6' Entrance Deck
T	16" C-Clamp
U	24" C-Clamp
V	16" H-Beam
W	Post Attachment ,7" Port Side
X	Entrance Plug
Y	Entrance Slide
Z	Top Roller Plug
1	¼ x 1 ½ Flat Head Machine Screw
2	3/8 x 1 ½ Bolt
3	3/8 Washer
4	3/8 x ¾" Bolt
5	½" Shoulder Bolt
6	Fender Washer for Shoulder Bolt

Tools Needed

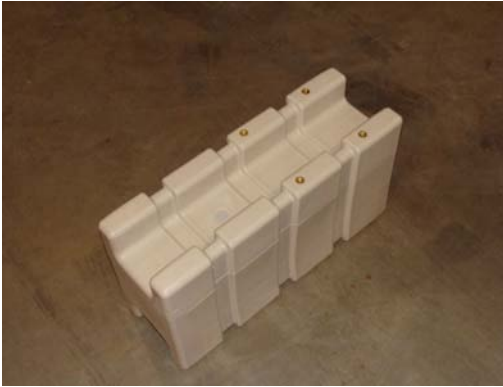
9/16" socket and ratchet with extension
 Phillips screwdriver if installing bow stop on Wave Port
 Dead Blow Mallet, or a maul and block of wood



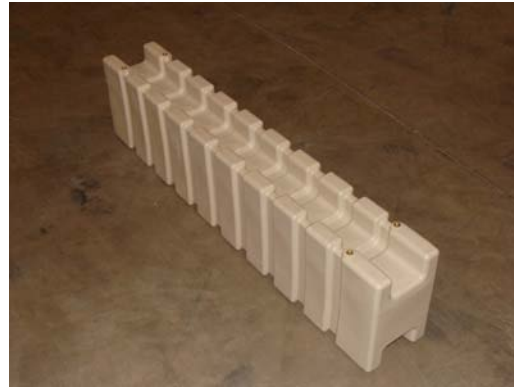
A – Dock Section



B - Corner Gusset



C – 24” H Beam



D – 50” H Beam



E - Post Attachment Port
Front & Wave Dock



F - Post Attachment
Insert/Adapter



G - Vertical Bumper



H - Horizontal Bumper 24"



J - Wave Port - 6 Foot



K- Bow Stop



L - Fixed Cleat - Small



M - Flip-Up Cleat



N - Entrance Slide



O - Port Front and Dock Hinge



P - Side Hinge- Port



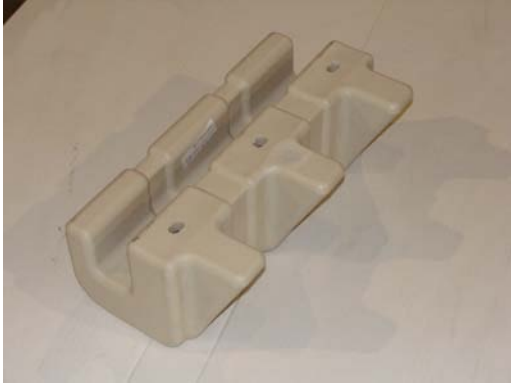
Q - Universal Dock Hinge



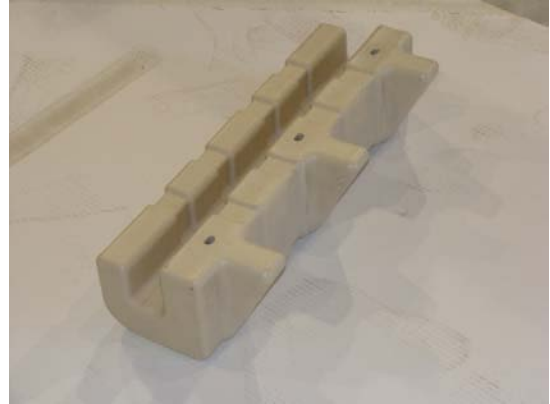
R - Linkage Arm 24"



S - 6 Ft Linkage/Entrance Deck



T – 16” C Clamp



U – 24” C Clamp



V – 16” H Beam



W - Side Post Attachment – Port Only



1 – ¼ x 1 ½ flat head machine screw



2 – 3/8 x 1 ½ bolt
3 – 3/8” washer



4 – 3/8 x ¾ Bolt
3 – 3/8” washer



5 – ½” Shoulder Bolt
6 – ½” Fender washer